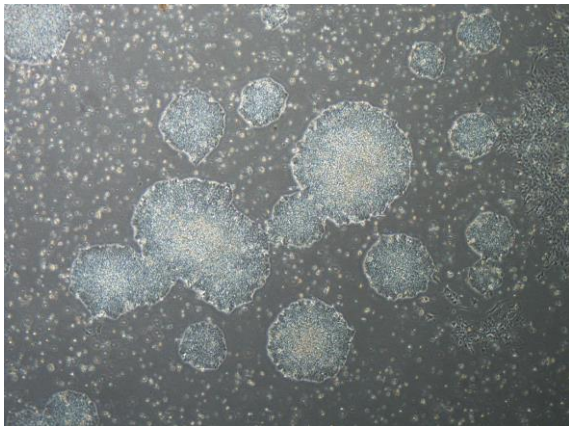
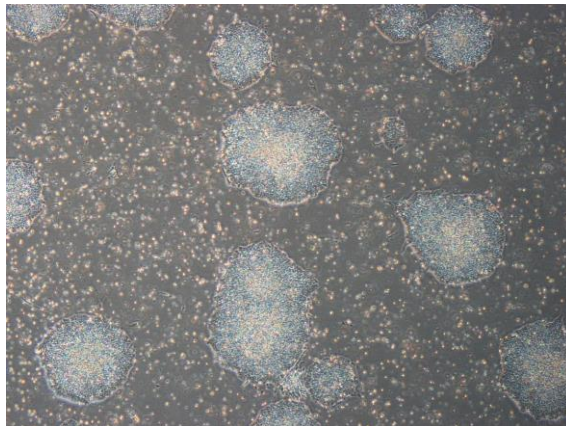


## 【 CiRA-j-1600 】 Morphology of iPSC colonies

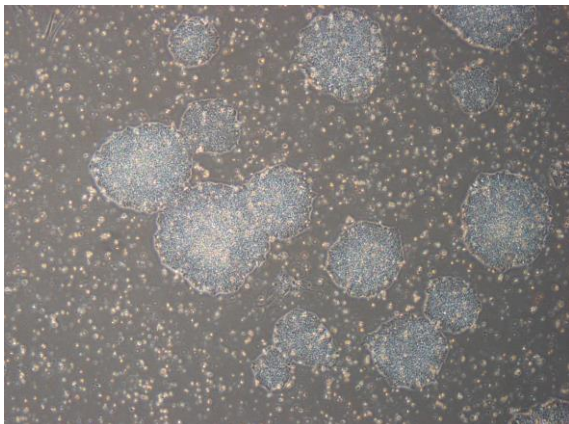
CiRA-j-1600-A: passage-2



CiRA-j-1600-B: passage-5



CiRA-j-1600-C: passage-3



CiRA-j-1600-D: passage-

No Photo

CiRA-j-1600-E: passage-

No Photo

CiRA-j-1600-F: passage-

No Photo

( All images were captured at 4x magnification )